



2019
product catalogue



/ We are trusted specialists

Screen Solutions (SSV) is a family owned and operated company with over 20 years' experience in the manufacture and supply of commercial office furniture. We specialise in the design and manufacture of custom screen systems to suit the ever-changing office environment. Screen Solutions (SSV) – are a 100% wholesale manufacturer providing resellers nationwide with screens and desking systems.

The SSV team are focussed on providing our clients with exceptional service, knowledge and experience to ensure all your furniture requirements are achieved. We have successfully delivered projects from the single desk and screen to providing up to 2200 screens and Electric sit / stand desks for a major client.

Manufacturing locally, supporting local suppliers SSV is able to ensure the highest quality product, tested to industry standards, manufactured in 2-4 weeks complemented by our sourcing department developing our desk ranges with our international supply partners to our quality standard.

Screen Solutions (SSV) are embracing an ever-changing market, listening to our customers and, as always, striving to provide innovative solutions for today's evolving workspaces. We recognise that businesses are no longer just providing desks and chairs but, rather, network and connectivity solutions.



/ Our history

Founded in 1997, Screen Solutions (SSV) was the response to what we believed was a need for high quality, customised, Australian made screen systems. This remains the driving force behind Screen Solutions (SSV) today.

After actively selling office furniture for a number of years, Our CEO Kim began to design and develop a unique partitioning system that would be robust, fairly priced and accessible to the market via a reseller network across the country.

After the success of our original Direction 65mm system, Screen Solutions (SSV) continued to design and develop additional screen systems to meet market demand. Now the company has grown to be more than a screen manufacturer and now produces a number of workstation and storage systems to suit the commercial office environment.

Screen Solutions is continuing to explore new designs including the introduction of Electric Sit / Stand desks to remain relevant in the ever-changing commercial furniture space.



/ Screens



Signature

/ 35mm Screen System

A flexible workplace system, the Signature 35 offers a smart slim-line screen design, maximising form and function in the workplace. When paired with our desk specific bracketry it offers a full height, desk mounted or void screen solution. Being fully pinable our Signature 35 completes the workspace. Available in custom choice of Fabric & powder coat colours, your vision becomes our design.

Specification Details

- / Dimensions - Custom Made
- / Width 400mm - 2100mm W
- / Height 300mm - 2100mm W
- / Extrusion 35mm
- / Profile: Flat Capping
- / **Material:** Aluminium, Solid 28mm Pinnable MDF Board, Water Based Glue
- / Capacity to fit 6mm, 7mm & 12mm Acoustic panel
- / **Powder-coat:** Standard Satin White, Satin Black and PSP

Warranty

- / 10 Year Warranty

Options

- / Fabric as nominated by Client
- / House fabric Laine Suzette
- / Void Screen (200 - 690)
- / Power Blade
- / Function Wall
- / Slotted Top Capping
- / Glazing
- / Acrylic Panels
- / Acoustic Rail Insert to accommodate 12mm Acoustic Panel
- / SSV Accessories
- / SSV ranges of brackets
- / Dulux Powder-coat colours



Direction

/ 50mm Screen System

The Direction 50 Screen system provides privacy, flexibility, Acoustics and functionality. Direction 50 can be tailored to suit any desktop configuration. Available as a solid screen, tile screen and void screen with options of base or mid height ducting all workplace requirements can be met. Your choice of fabric, powder coat and accessories the Direction 50 screen system is completely customised to suit your taste and workplace environment. With our special screen channels there are numerous materials that can be used when trying to create your office vision. All of our accessories can be hung from our universal top rail.

Specification Details

- / Width 400mm - 2100mm W
- / Height 300mm - 2400mm W
- / Extrusion 50mm
- / **Profile:** Flat Capping
- / **Material:** Aluminium, Solid or Pinnable MDF Board, Water Based Glue
- / Capacity to fit 6mm, 7mm, 9mm Acoustic panel
- / **Powder-coat:** Standard Satin White, Satin Black and PSP
- / **Cable Management:**
- / Base Ducted
- / Mid Ducted

Warranty

- / 10 Year Warranty

Options

- / Fabric as nominated by Client
- / House fabric Laines Suzette
- / Void Screen (200 - 690)
- / Tile Screen
- / Intermediate rail
- / Power Blade
- / Power Pole
- / Function Wall
- / Glazing
- / Acrylic Panels
- / SSV Accessories
- / SSV ranges of brackets
- / Dulux Power Coat colours



Direction

/ 65mm Screen System

The Direction 65 Screen system provides a substantial screen structure for added privacy, flexibility and acoustics to the open office. Direction 65 can be tailored to suit each workplace environment. Available as a solid screen, tile screen and void screen with base or mid height ducting to accommodate all cabling requirements (Cat 5 & 6). Your choice of fabric, powder coat and accessories the Direction 65 screen system is completely customised. All of our accessoires can be hung from our universal top rail.

Specification Details

- / Dimensions - Custom Made
 - Solid Screens
 - Width 400mm - 2100mm W
 - Height 300mm - 2400mm W
 - Extrusion 65mm
- / **Profile:** Flat Capping
- / **Material:** Aluminium, Solid or Pinnable MDF Board, Water Based Glue
 - Capacity to fit 6mm, 7mm, 9mm
 - Acoustic panel
- / **Powder-coat:** Standard Satin White, Satin Black and PSP
- / **Cable Management:**
 - Base Ducted
 - Mid Ducted

Options

- / Fabric as nominated by Client
- / House fabric Laines Suzette
- / Void Screen (200 - 690)
- / Tile Screen
- / Intermediate rail
- / Power Blade
- / Power Pole
- / Function Wall
- / Glazing
- / Acrylic Panels
- / SSV Accessories
- / SSV ranges of brackets
- / Dulux Power Coat colours

Warranty

- / 10 Year Warranty



Divide / Screen System

A light and versatile pleasing system, the Divide Screen offers a sleek option for user privacy while not impacting on the open office environment. Paired with our exclusive desk mounted brackets the Divide screen will complete any office environment.

Specification Details

- / Dimensions - Width 900mm, 1200mm, 1500mm, 1800mm W
Height 370mm, 600mm, 900mm W
Extrusion 30mm
- / **Profile:** Flat Anodised Trim
- / **Material:** Aluminium, Solid 28mm MDF
Acoustic Board, Pinnable foam, Water Based Glue

Warranty

- / 10 Year Warranty

Options

- / SSV range of Brackets
- / SSV Accessories
- / Fabric as nominated by Client
- / Standard House fabric - 4 colours
- / Black, Green, Blue, Grey
- / Black aluminium trim - POA



/ Direction 50/65mm



/ Desking Systems



Activ Electric

/ Desking Screen System

Activ - offering a dual motor, three stage frame, with complete control of all aspects of the frame from the handset. Activ is a step above the rest. Featuring the latest anti collision technology the Activ range of frames is perfect for all office environment. Complete with a 5 year warranty

Configurations

- / Straight Desk
- / H Frame
- / Workstation
- / 120 Degree - Indent only

Warranty

- / 5 Year Warranty

Dimensions

- / Height 630mmH - 1290mm H (Plus top)
- / Suit Desk worktops 1200mm - 2100mm W
- / Suit Workstation worktops 1200/1200 - 2100/2100mm W
- / Suit Worktop depth 700 - 900mm
- / **Material:** Powder Coated Steel frame
- / **Powder-coat:** Standard Black or White
- / **Weight Capacity:** 120KG
- / Dual Motor - 3 Stage Leg
- / Four pre-set memory
- / Programmable from the Hand Set
- / LED display



/ A Frame

Mix – A Frame, Hoop & U Frame / Desking Screen System

MIX - offers style for the ever changing office environment. With a choice of 3 different unique leg profiles. MIX will give you the point of design and difference you're looking for. Choose from, A Frame, U Frame and Hoop.

Configurations

- / Straight Desk
- / Single/Double
- / Workstation
- / 120 Degree - Indent only

Warranty

- / 10 Year Warranty

Dimensions

- / Standard Height 720mm H (frame height 695mm)
- / Suit Desk worktops 1200mm - 1800mm W
- / Suit Workstation worktops 1200/1200 - 1800/1800mm W
- / Suit Worktop depth 750mm
- / **Material:** Powder Coated Steel frame
- / **Powder-coat:** Standard Black or White
- / **Weight Capacity:** 100KG







Element

/ Desking Screen System

Element - Offers the user a flexible, sturdy, simple asthetically pleasing leg system to suit any office configuraiton at an economical price point.

Configurations

- / Straight Desk
- / Back to Back
- / Shared leg (to suit 2/3/4 way runs)
- / Workstation

Warranty

- / 5 Year Warranty

Dimensions

- / Tech Height Adjustable 685mm – 980mm
- / Standard Height 720mm H (frame height 695mm)
- / Suit Desk worktops 1100mm - 2400mm W
- / Suit Workstation worktops 1200/1200 - 2100/2100mm W
- / Suit Worktop depth 450 - 900mm
- / Custom sizes available on application
- / **Material:** Aluminium with Cast fittings
- / **Powder-coat:** Standard White & Silver
- / **Weight Capacity:** 125KG



Essential – Electric Sit Stand / Desking Screen System

Essential Electric Sit Stand – offering a dual motor, three stage frame, with a pre-programmed LED handset, the latest anti collision technology and a 10 year warranty the elegant looking Essential frame offers quiet and smooth electric adjustment. An added bracket block ensures connectivity with various screen options. Easily assembled, and able to be configured in H

frames with either the Essential Fixed or Winder height adjustable frame.

Our Essential Series Frames have the full range covered whether it be Electric, winder or fixed. With the same leg profile you can get a uniform look with a floor of mixed mechanisms.

Configurations

- / Straight Desk
- / H Frame
- / Workstation
- / 120 degree (Indent Only)
- / AFRDI APPROVED

Warranty

- / 10 Year Frame Warranty
- / 5 Year electric warranty

Dimensions

- / Height 600mm H - 1250mm H (Plus top)
- / Suit Desk worktops 1200mm - 2100mm W
- / Suit Workstation worktops 1200 / 1200 - 2100/2100mm W
- / Suit Worktop depth 700 - 900mm
- / **Material:** Powder Coated Steel Frame
- / **Powder-coat:** Standard Black, Silver & White
- / Weight Capacity: 125KG
- / Dual Motor - 3 Stage Leg
- / Three pre-set memory
- / Programmable at factory for min and max heights
- / LED display



Essential – Winder Height

/ *Desking Screen System*

Essential Winder – a solid looking frame that offers manual height adjustment from a concealed handle. An added bracket block ensures connectivity with various screen options. Easily assembled, and able to be configured in H frames with either the Essential Fixed or Electric height adjustable frame the Essential Winder frame is complete with a 5 year warranty.

Configurations

- / Straight Desk
- / H Frame
- / Workstation

Warranty

- / 5 Year Warranty

Dimensions

- / Winder Height Adjustable 650mm – 1070mm
- / Height 720mm H (695mm frame height)
- / Suit Desk worktops 1200mm - 2100mm W
- / Suit Workstation worktops 1200/1200 - 2100/ 2100mm W
- / Suit Worktop depth 700 - 900mm
- / **Material:** Powder Coated Steel frame
- / **Powder-coat:** Standard Black or White
- / Weight Capacity: 120KG



Essential – Fixed Height

/ Desking Screen System

Essential – a sturdy eye catching looking frame that offers expanding beams and connectivity with various screen options. Easily assembled in no time and able to be configured in H frames with either the Essential Winder or Electric height adjustable frame the Essential fixed height frame is complete with a 10 year warranty.

Configurations

- / Straight Desk
- / H Frame
- / Workstation

Warranty

- / 10 Year Warranty

Dimensions

- / Height 720mmH (695mm frame height)
- / Suit Desk worktops 1200mm - 2100mm W
- / Suit Workstation worktops 1200/1200 - 2100/2100 mm W
- / Suit Worktop depth 700 - 900 mm
- / **Material:** Powder Coated Steel frame
- / **Powder-coat:** Standard Black or White
- / Weight Capacity: 120KG



Evolve

/ Desking Screen System

Evolve - Aluminium Desk frame offers a unique triangular profile that is a stand out with sizes being completely customisable. Manufactured locally the Evolve system can be made to suit any height - or configuration required. Matching tables are also available complete your fitout from top to bottom.

Configurations

- / Straight Desk
- / Back to Back
- / Shared leg (to suit 2/3/4 way runs)
- / Workstation

Warranty

- / 10 Year Warranty

Dimensions

- / Standard Height 720mm H (frame height 695mm)
- / Suit Desk worktops 1100mm - 2400mm W
- / Suit Workstation worktops 1200/1200 - 2100/2100mm
- / Suit Worktop depth 450 - 900mm
- / Custom sizes available on application
- / **Material:** Aluminium with Cast fittings
- / **Powder-coat:** Standard Black, White & Silver
- / **Weight Capacity:** 125KG



/ Essential H Frame



/ Storage



Huey

/ *Mobile Pedestal*

Huey Mobile pedestal offers generous storage capacity to 40kgs, Nylon casters with the front two lockable and a 5th wheel for anti-tilt stability.

Lockable - with master and change keys available

Dimensions

/ Dimensions -

/ Width 900mmW

/ Height 600mmH

/ Depth 525mmD

/ **Material:** Cold Rolled Steel Plate wall thickness 0.7mm

/ **Powder-coat:** Standard Satin White and Satin Black

Warranty

/ 5 Year Warranty





Huey

/ Mobile Caddy

Huey Mobile Caddy offers generous storage capacity to each shelf concealed behind a smoothly operated Tambour door. Offering two personal draws and one file draw for all your storage needs. Nylon casters with the front two lockable.

Lockable - with master and change keys available

Dimensions

/ Width 900mm

/ Height 600mm

/ Depth 525mm

/ **Material:** Cold Rolled Steel Plate wall thickness 0.7mm

/ **Powder-coat:** Standard Satin White and Satin Black

Warranty

/ 5 Year Warranty







/ Accessories



Cable Tray

Fixed Cable Tray to suit Essential & Activ Desk Ranges. Conceals soft wiring cables, creating a neat solution to cable management.

- / Made to size
- / 150mmW x 60mmH
- / Includes segregation
- / Fully enclosed lid
- / Standard punch outs.
- / Available as a single or shared Tray

Options

- / Custom size
- / Custom Punch outs
- / Powder coat colour



Screen Hung Shelf

The Screen Hung shelf fits seamlessly into the top rail of a standard 35mm, 50 mm & 65mm screen systems

Dimensions

- / Width 300mm
- / Length 600mm
- / Drop Height 320mm
- / **Material:** Powder-coated steel frame
- / **Powder-coat:** Standard Satin White and Silver

Options

- / Dulux Powder-coat Colours
- / 10 Year Warranty



Desk Hung Shelf

The Desk Hung shelf fits seamlessly onto the 25mm worktop - perfect for height adjustable desks. Includes 3 Chrome Hoops

Dimensions

- / Width 300mm
- / Length 600 - 1000mm
- / Height 230mm
- / **Material:** Powder-coated steel frame - 25mm laminate white top
- / **Powder-coat:** Standard Satin White, Satin Black and Silver

Options

- / Dulux Powder-coat Colours
- / 10 Year Warranty



Accessory Panel 4 Slot

In tight spaces the Accessory panel is a great space saver. Add in 2,3 or 4 paper tray holders to meet your paper storing needs.

Dimensions

- / Width 260mm
- / Height 365mm
- / Extrusion 35mm, 50mm, 65mm
- / **Material:** Powder-coated Steel
- / **Powder-coat:** Standard Satin White, Satin Black and PSP

Options

- / Dulux Powder-coat Colours
- / Landscape orientation
- / Add in Paper trays
- / 10 Year Warranty



Screen Hung Whiteboard

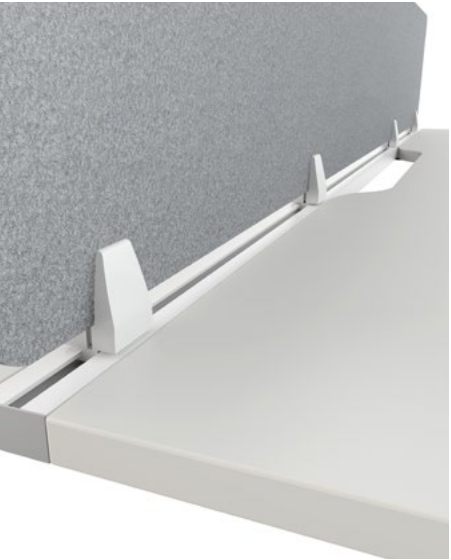
When space is tight add a white board to your screen for all the notes you need to keep.

Dimensions

- / Dimensions - Custom Made
- / Standard Size
- / Width 300mm
- / Height 400mm
- / Extrusion 35mm, 50mm 65mm
- / Material: Powder-coated steel
- / Powder-coat: Standard White

Options

- / Landscape orientation
- / Custom Size and Shapes
- / 10 Year Warranty



Slide on 24mm Acoustic Divider

A flexible workplace slide on divider , 24mm acoustic panel to suit 25mm worktops, offering great flexibility to the modern open plan office. Slide it on, slide it off...

Dimensions

- / Dimensions - Custom Made
- / Standard Size
- / Depth 800mm
- / Height 540mm
- / Panel thickness 24mm
- / **Material:** 100% Polyester Fibre (PET)
- / **Features:** Acoustic Pinable panel

Options

- / 12 Colours to select from
- / Custom shapes available
- / 12mm & 18mm Panel Available
- / 3 Year Warranty



A4 Paper Tray

- Dimensions**
- / Width 240mm
 - / Depth 320mm
 - / Height 60mm
 - / Extrusion 35mm 50mm 65mm
- Material:** Powder-coat steel
- Powder-coat:** Standard Satin White, Satin Black and PSP

- Options**
- / Dulux Powder-coat Colours
 - / Landscape orientation
 - / 10 Year Warranty



Name Tag Holder

Personalise your space with a name plate made specifically for the 35mm, 50mm & 65mm screen systems. Simple installation into the TOP rail of the screen system.

- Dimensions**
- / Width 200W
 - / Height 40mm
 - / Extrusion 35mm, 50mm
- Material:** Folded powder-coated steel
- Powder-coat:** Standard Satin White, Satin Black and PSP

- Options**
- / Dulux Powder-coat Colours
 - / Landscape orientation
 - / 10 Year Warranty



Anti Fatigue Mat

The SSV Anti fatigue mat is the perfect addition to either the Essential or Activ Sit / Stand desk frames. The anti fatigue mat will ensure you stay comfortable all day seated or standing

- Dimensions - Custom Made**
- / Standard Size
 - / Width 750mm
 - / Depth 460mm
 - / Mat thickness 20mm

- Colour**
- / Black

SUZETTE



Range Colours							
white	ice cream	neutral	cafe	eggshell	organic	limone	spice
pistachio	mint	celery	decor	lucerne	hula	opal	citrus
humbug	tiffany	ivory	blizzard	tequila	pavement	spine	nimble
joker	aero	iris	dolphin	shadow	sinker	stormcloud	periwinkle
twist	heaven	mainsail	luxury	conquest	olympia	cyan	octane
pizzazz	vibrant	russet	rosso	gala	mulberry	popeye	stallion

Product	Suzette
Width	188cm
Weight	275 g/m2
Composition	100% Polyester
Pattern Repeat	Nil
CTA Rating	General Commercial Upholstery Commercial Screen Fabric
Martindale	37,600 Abrasions
Applications	Upholstery & Screens
Flammability	AS1530.3, AS3837
Green Rating	

laineTM

Visit laine.com.au or call +613 9720 6566



T +61 3 9720 0044

A 1005 Mountain Highway,
BORONIA, VIC, 3155

E sales@screensolutions.com.au

W www.screensolutions.com.au

